

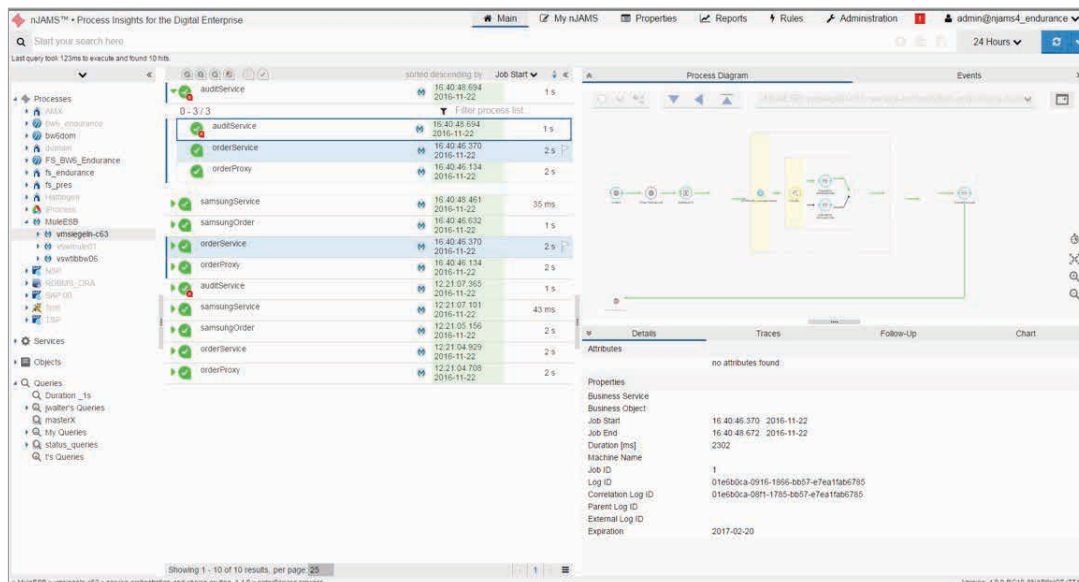
# nJAMS, from Integration Matters, helps MuleSoft Anypoint customers achieve digital business success



Operational excellence is critical to a company's competitive advantage and bottom-line results. Delivering exceptional customer experience requires integrated processes, high-performance systems and a comprehensive Master Data Management. Integration Matters helps MuleSoft users to deliver on brand promises by providing tools and expertise necessary to monitor end-to-end business processes and measure business outcomes.

Integration Matters has developed **nJAMS** (not **J**ust **A**nother **M**onitoring **S**olution) to help businesses effectively monitor end-to-end process execution in highly demanding environments and measure business outcomes – across integration platforms, enterprise applications and cloud services. Unexpected issues in business-critical processes are detected before stakeholders are even aware of them. The IT operations team can immediately see where the core problem is located. nJAMS makes it easy to proactively identify any deviation and start escalation procedures quickly. In this way, problems are resolved before companies disappoint customers and damage their brands.

nJAMS sits on top of ESB Management Consoles, Application Performance and Infrastructure Management tools. All business events, network events, etc. are collected, correlated, processed, and visualized in detail. Once all technical information about your business processes is available, you can start tracking your KPIs in a dashboard and auto-generate alerts for any deviation from your SLAs.



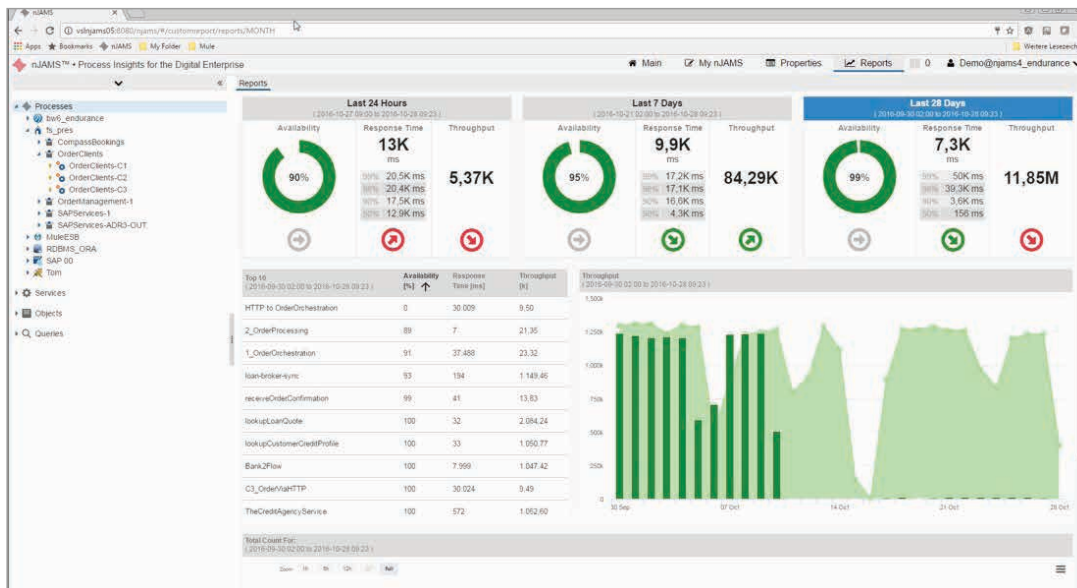
The screenshot displays the nJAMS interface with the following components:

- Process Diagram:** A flowchart showing the sequence of steps in a process, with a highlighted path.
- Process List:** A table of process instances with columns for process name, start time, end time, and duration.
 

Process Name	Start Time	End Time	Duration
auditService	16:40:49.594	2016-11-22	1 s
orderService	16:40:45.370	2016-11-22	2 s
orderProxy	16:40:45.174	2016-11-22	2 s
samsungService	16:40:45.461	2016-11-22	35 ms
samsungOrder	16:40:45.632	2016-11-22	1 s
orderService	16:40:45.370	2016-11-22	2 s
orderProxy	16:40:45.174	2016-11-22	2 s
auditService	12:21:07.385	2016-11-22	1 s
samsungService	12:21:07.101	2016-11-22	43 ms
samsungOrder	12:21:05.156	2016-11-22	2 s
orderService	12:21:04.929	2016-11-22	2 s
orderProxy	12:21:04.708	2016-11-22	2 s
- Details Pane:** Shows properties for a selected process instance, including Business Service, Business Object, Job Start, Job End, Duration [ms], Instance Name, Job ID, Log ID, Correlation Log ID, Parent Log ID, External Log ID, and Expiration.

nJAMS provides visibility into the entire chain of events, applications and processes business users care about. The interactive process diagram makes it easy to understand the process flow without involving software developers.

- nJAMS enables MuleSoft customers to
- \_always know what's going on** at any time and any point of any business-critical process
- \_support their company's business strategy** with operational excellence
- \_provide a central repository and control center** for mission-critical business processes with process diagrams
- \_respond proactively** to real-time business challenges
- \_reduce time-to-market** by simplifying development, test and operation of integration processes



nJAMS aggregates end-to-end log data and provides input for business performance dashboards and custom reports on actionable KPIs.

## Functions:

### Powerful search

With nJAMS you can search for any information that you need about the execution of your business processes - across integration platforms, enterprise applications and cloud services. A powerful query language is available for any sort of query

### Comprehensive process presentation

nJAMS is easy to use and incredibly fast. All you need is a web browser, plugins or applets are not required. nJAMS Server is available on-premise and as cloud service.

### Alerting Engine

You can define rule based actions for specific events to trigger notifications in case of any issue.

### Extracts

Extracts allows you to declare nJAMS log events at any place in your process definition during runtime. You can easily extract essential information of any process step wherever you need transparency.

### Process performance reports

Standard dashboards show the availability, response time and throughput of end-to-

end business processes for a certain period of time. Create your own custom dashboards with the embedded highcharts library.

### Ready to use right out of the box

Attach nJAMS to your business process applications and it works! To benefit from the full power of nJAMS extend your processes with explicit nJAMS activities.

### Fully decoupled

nJAMS is fully decoupled from the underlying business processes by using your preferred messaging platform.

### Inherent authentication/authorization

nJAMS is based on a secure user/role concept. Grant permissions to specific users/roles on any nJAMS object.

## nJAMS for MuleSoft Anypoint at a Glance

- \_ Visualization of end-to-end processes and process data in real-time
- \_ Extended monitoring capabilities for multiple integration platforms, enterprise applications and cloud services
- \_ Out of the box and custom process performance reports and KPI dashboards
- \_ Easy to implement, Easy to use, Easy to scale

## Company Profile

Integration Matters ([www.IntegrationMatters.com](http://www.IntegrationMatters.com)) is the brand name of the IT consulting firm Faiz & Siegel GmbH and the software company Faiz & Siegel Software GmbH. We help businesses achieve their strategic goals - with software tools and know-how that develop, implement and monitor critical business processes. More than 300 customers around the world rely on our products and services to achieve operational excellence and drive business initiatives. These include market leaders from the energy, telecommunication, banking, insurance, retail, transport and logistics sectors.